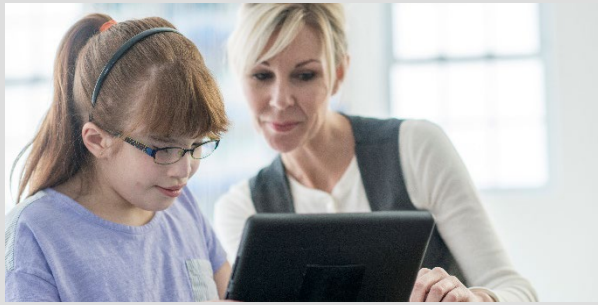


Alternate ACCESS for ELLs

2023-24 Information for Families

What is the Alternate ACCESS for ELLs?



The Alternate ACCESS for ELLs is an English language proficiency (ELP) assessment. It is administered in the four language domains of listening, reading, speaking, and writing for students in grades 1-12 identified as English learners (ELs) who have significant cognitive disabilities.

Who is administered the Alternate ACCESS for ELLs?

Federal law requires schools to identify all students who may be English learners (ELs). ELs have a right to receive English language support services. Students identified as ELs are required to be assessed annually for their ELP. This includes students that receive special education services. The Alternate

ACCESS for ELLs may be the most appropriate ELP assessment for students with individualized education programs (IEPs) who are recognized as having a significant cognitive disability and are expected to participate in the DLM, Wisconsin's alternate state assessment.

What does the Alternate ACCESS for ELLs measure?

The Alternate ACCESS for ELLs measures social and instructional language along with the language of academic content for mathematics, science, and English language arts. This assessment allows students to demonstrate their ELP gains along the World-Class Instructional Design and Assessment (WIDA) Alternate English language development (ELD) standards continuum. Tests are divided into grade-level clusters:

- grades K-2
- grades 3-5
- grades 6-8
- grades 9-12

The Alternate ACCESS for ELLs is based on Alternate Model Performance Indicators (AMPis) which provide examples of how students may use or process language across various alternate model performance levels.



How are the test results used?



The test results allow teachers to work together with a student's family to support the student's English language development and instructional needs.

Test results may also be used by the Department of Public Instruction for monitoring and accountability purposes.

What types of scores are provided?

All sections of the test are locally scored by the test administrator. Parent/Guardian Reports include scores which can be used to monitor a student's growth over time within a language domain.

The report also gives an interpretation of the scores.

WIDA provides scale scores on K-12 vertical scales in the domains of listening, reading, writing, and speaking.

Proficiency level scores interpret the scale scores in terms of six proficiency levels.

What are the English Language Development Standards?

The WIDA English Language Development (ELD) Standards are the foundation for the ACCESS for ELLs assessment and all WIDA resources. These standards represent the

language students need to be successful in grades K-12. The standards are available at <https://wida.wisc.edu/teach/standards/eld>.

Where can I find more information about the Alternate ACCESS for ELLs?



For more information about the Alternate ACCESS for ELLs contact the Office of Educational Accountability at osamail@dpi.wi.gov or visit <https://dpi.wi.gov/assessment/ell> and <https://wida.wisc.edu/assess/alt-access>

