

The logo features a stylized circular graphic on the left composed of a blue arc and a yellow arc, with a yellow vertical bar and a yellow triangle. To the right of this graphic, the word "RETURN" is written in a large, bold, dark blue sans-serif font. To the right of "RETURN", the year "2020" is written in a smaller, thin, dark blue sans-serif font, oriented vertically.

RETURN 2020

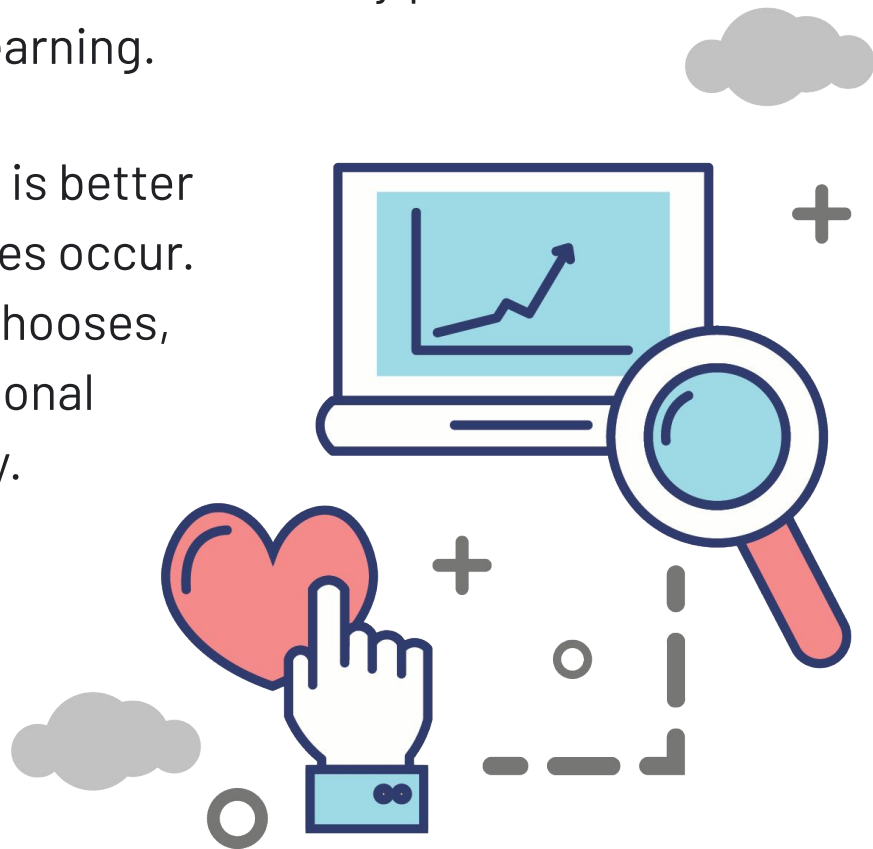
kUSD.edu/return2020



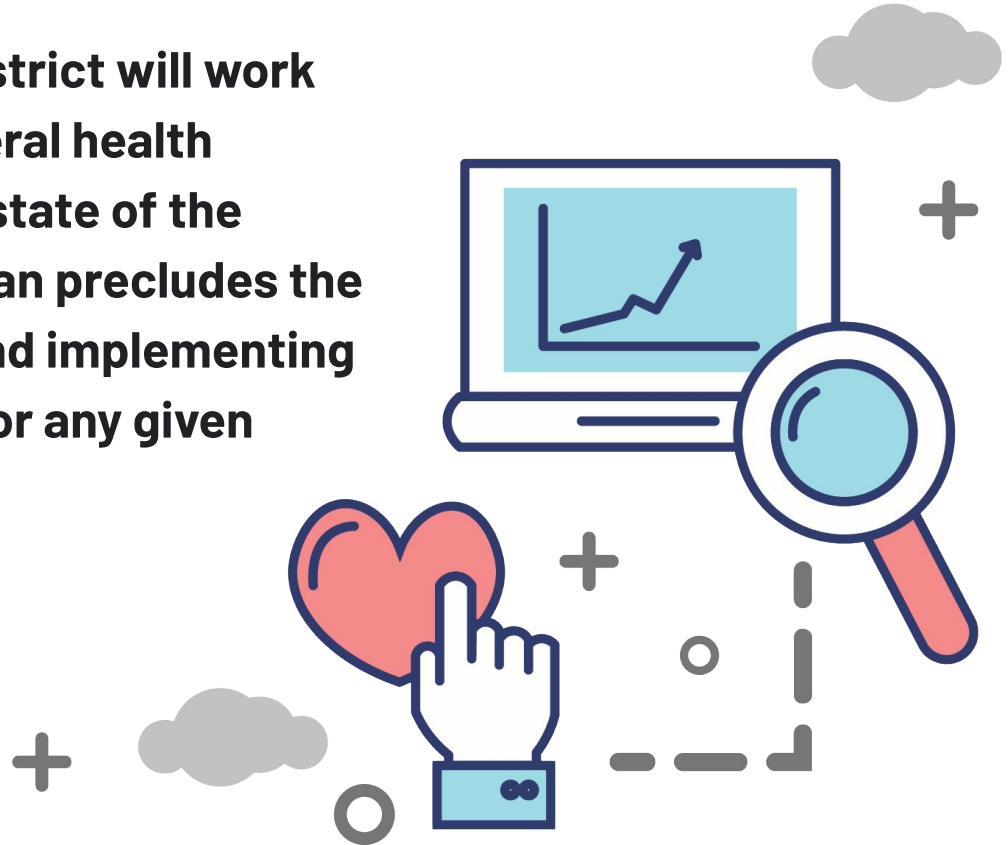
The purpose of the Return 2020 plan is to emphasize options for Kenosha Unified's new and returning families, whether they prefer traditional in-person learning or virtual learning.

In addition, it is intended to ensure KUSD is better prepared should additional school closures occur. No matter what learning model a family chooses, the goal is to provide high quality educational experiences in a safe and meaningful way.

We politely ask that you note your questions and hold them for the Q&A at the end of each topic.



NOTE: This is a fluid plan. The district will work closely with local, state and federal health agencies to closely monitor the state of the pandemic. Nothing within this plan precludes the district from closing buildings and implementing virtual learning for all students for any given period of time.



Technology Access

- Devices
- Internet access
- Technology Support





Instructional model options

Instructional model options

In-person Learning
Virtual Learning

Both models will be
available for all students

Return 2020 initial parent survey results (8,674 responses)

72%

prefer in-person
learning for their
child(ren) in the fall

46%

are unsure of the period
of time they are willing
to commit to the option
of their choice

97%

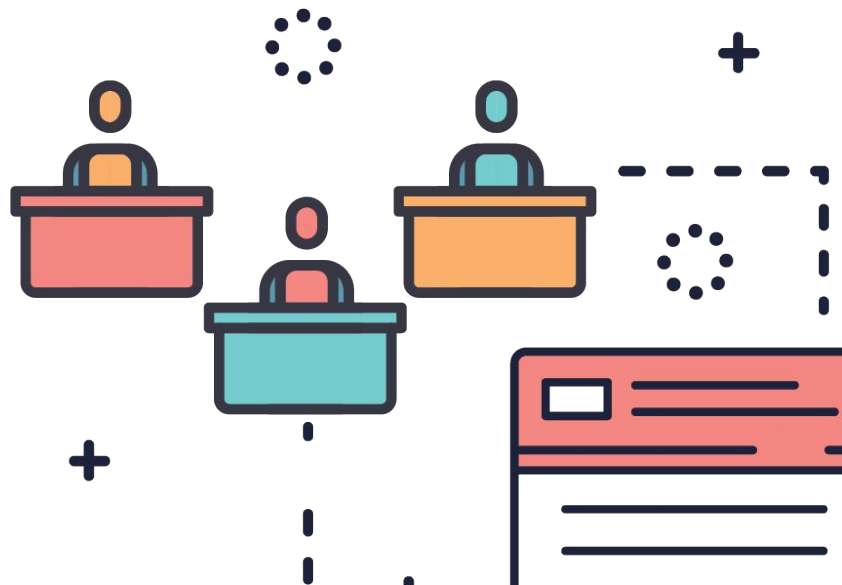
of families who
responded have internet
access at home

Instructional model options

In-person Learning
Elementary School

- Core academics
- Specials
- Library
- Counselor lessons

*No physical field trips until further notice

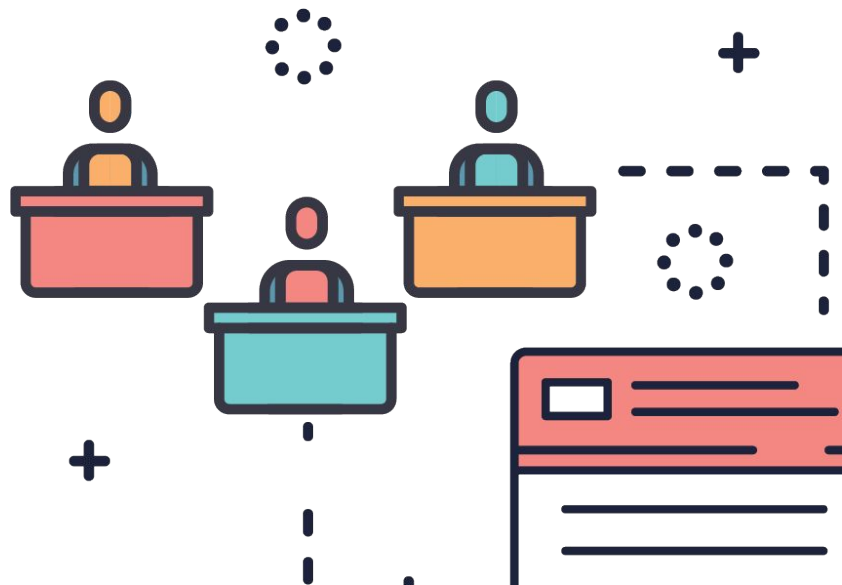


Instructional model options

In-person Learning
Middle and High
School

- Core academics
and electives

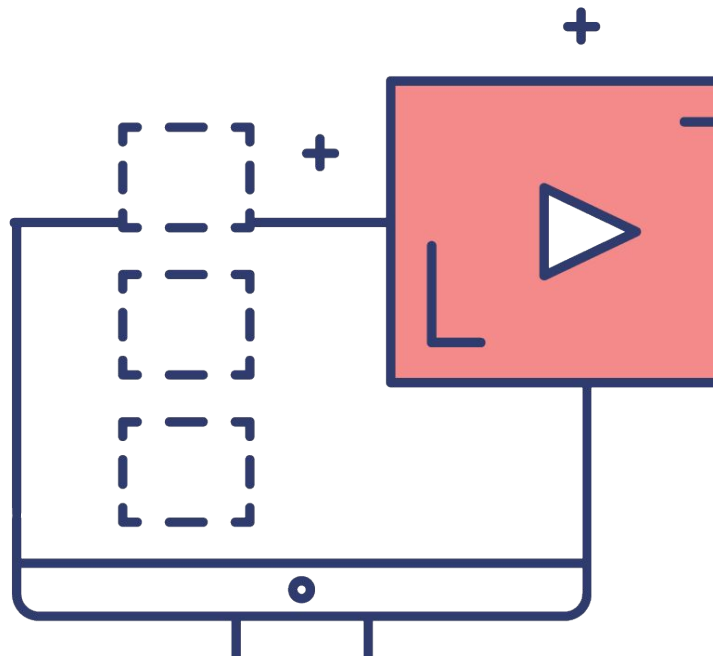
*No physical field trips until further notice



Instructional model options

Virtual Learning

- Two modes for students learning from home:
 - Face-to-face on-line learning with teacher
 - Independent on-line learning activities





Instructional model options



Virtual Learning Expectations

- Virtual staff will work at their building site
- Daily attendance will be recorded
- Two platforms:
 - Seesaw (Prek-2)
 - Google Classroom (3rd-12th)
- Students will complete required coursework and assessments with virtual teacher support
- Grading will mirror in-person learning expectations
- One-year commitment



Instructional model options

Virtual Learning Elementary School

- Anticipate elementary classroom teachers will be assigned 100% in person or 100% virtual instruction.
- Elementary schools currently have no students on Friday afternoons to allow for planning, collaboration, and professional learning for both virtual and in-person teachers.



Instructional model options

Virtual Learning Middle School

- Middle school structure and the “house” concept support the flexibility needed for virtual learning, providing for student learning needs as well as staff learning support needs during their daily professional period.
- Pending the number of families who elect virtual it is recommended that one or more house teams at each school be designated to support all virtual learners



Instructional model options

Virtual Learning High School

Key differences between Elementary, Middle and High School levels:

- Credit acquisition focus
- Specific teacher certification
- Broader array of specialized courses
- More students and more class sections
- Greater need for teachers to teach both in person and virtual
- Extended day course sections probable
- Complex scheduling
- Possible teaching overloads

Instructional model options

Virtual Learning High School 4+1 Model

M

TU

W

TH

In-person school and live virtual learning occurs, as usual.

F

In person and virtual students will attend school virtually on Fridays for continuity of learning. to provide for additional virtual instruction, preparation/planning time, and professional learning/collaboration time.

AM

- **Staff will provide virtual independent lessons** for all students (both in-person and virtual). No students report on Fridays.
- **Additional virtual face-to-face instructional/intervention** time for special needs and **planning opportunities** are available.

PM

- **Staff preparation and collaboration** time to ensure **curricular alignment** between virtual and in-person learners.
- Opportunities for **professional learning**, with an **emphasis on virtual instructional methods**.



Instructional model options

Virtual Learning Course Offerings

- A scheduling sub-committee has formed to discuss K-12 courses offered based on enrollment
- Not all electives may be offered or suitable for virtual learning



Teaching and Learning

Teaching and Learning

Accelerate Learning

- Overall instructional goal will be to accelerate learning
- Focus on 2020-21 grade level academic goals
- Formative assessments
- Frequent review of data
- Provide consistent feedback to students and families
- Provide clear expectations for students and families for access to Seesaw (grades PK-2) and Google Classroom (grades 3-12)
- Focus first days of school on technology expectations

Teaching and Learning

Learning Supports

Special Education and Student Support

- Whether in-person or virtual staffing plans and schedules will be designed to provide access to individualized services to meet IEPs and 504 plans.
- Parent meetings, including IEPs, 504s, CSI and parent teacher conferences, will be held virtually to the greatest extent possible

English Learners

- Distance instruction provided virtually, online, or telephonically
- Accommodations on assignments as recommended on Language Development Plans (LDPs) and through collaboration with English as a Second Language (ESL) teachers
- Students using their first language (google translate for assignments, and submitting work in their first language)

Gifted and Talented

- Educational programming outlined in a student's GaTE Plan will be implemented virtually or in person
- Classroom teachers will continue to monitor student's academic progress and correspond with students and families



Teaching and Learning

Social and Emotional Learning

Supports for Students

- Social and emotional learning (SEL) is fundamental to academic success
- Building and strengthening relationships with students will be a priority in both virtual and in-person instructional settings
- Students will benefit from the school wide implementation of CASEL 3 Signature SEL Practices, during daily lessons and interactions

Supports for Families

- A video will be created and shared on social media that includes tips on how families can best emotionally prepare their child for return to school

Supports for Teachers

- Staff will complete three SEL modules by August 31st (approximately 2 hours total)
- Monthly professional learning opportunities

Teaching and Learning

Professional Learning

To ensure that the learning needs of all KUSD students are met in the safest learning environment possible KUSD staff will participate in professional learning on the following topics:

- Safe School Environment
- Rigorous Instruction & Support Practices
- Using Technology for Teaching and Learning
- Social Emotional Learning for Students
- Employee Well-Being
- Creating a Support System at Home with Families



Teaching and Learning

Athletics and Extracurricular Activities

Athletics

- To be determined based on WIAA guidance and the ability to adhere to safety and social distancing practices
- WIAA guidance for fall sports is expected in late July

Clubs and activities

- To be determined based on the ability to adhere to safety and social distancing practices

BE FLEXIBLE

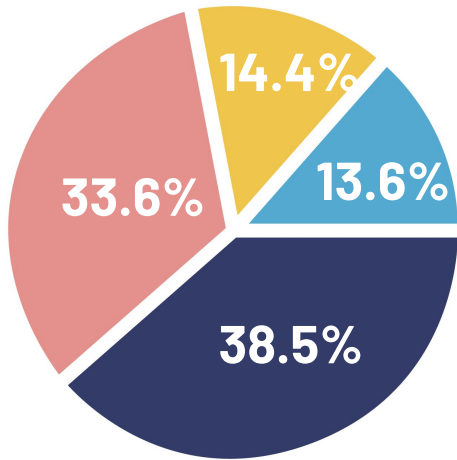
Activities and events may be postponed or adjusted to meet guidelines or current conditions in schools or the community



Operations

Operations

Require all staff to wear a face covering at work?



REQUIRED

at all times

REQUIRED

where physical distancing not possible

RECOMMENDED

NO

Personal Protective Equipment

Face Masks & Face Shields

KUSD will be providing the following PPE to staff and students:

Staff

- (4) cloth face masks
 - 2 of the 4 masks will have a clear covering over the mouth area
 - (1) plastic face shield

Students

- (2) cloth face masks



Operations

Face Mask Protocol

Current Administration's Recommendation

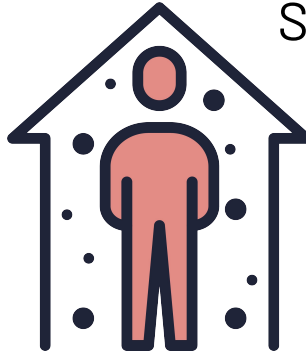
	Highly Recommended	Require with Some Limitations	Require at All Times
Comments	Current recommendation from Kenosha County Division of Health Services	Need to provide direction on the response & what the consequences would be if not worn by a student: <ul style="list-style-type: none">• In school• On a bus	Need to provide direction on the response & what the consequences would be if not worn by a student: <ul style="list-style-type: none">• In school• On a bus
When Required:	<ul style="list-style-type: none">• Choir/Orchestra• CTE classes• On busses	All, except: (see exceptions below)	All
When Not Required:	All other areas but we highly recommend them	<ul style="list-style-type: none">• P.E.• Outside• Heat related (in non-AC buildings)• When safe social distancing is possible such as a staff member in an office or alone in a classroom• Health conditions• Band• Eating	None

Operations

Symptomatic Staff and Students Daily Screening

Primary screening of students and staff:

- Parent/guardian performs a daily screening at home
- Staff to self-screen before coming into work each day



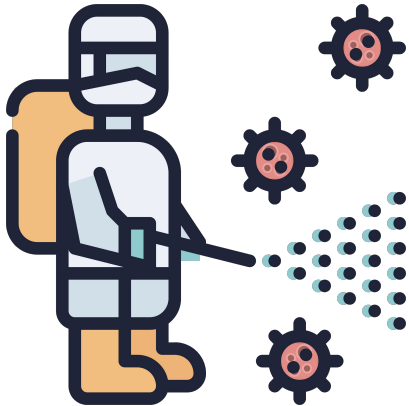
Symptoms in the building

- Symptomatic students will go to an established isolation room until they can safely leave the building and staff will be sent home
- KCHD will assist KUSD to determine a course of action for closure on a case by case basis

Operations

Cleaning and Disinfecting

- Updated cleaning protocols and expectations
- Protexis electrostatic disinfecting sprayers



- Experience in responding after a positive case
- Staff responsibility in classrooms, offices, etc.
 - Staff members will be provided a squirt bottle of disinfectant to use on equipment, materials, etc. in between uses, classes, etc.
 - Bottles will be refilled as needed by custodial staff

Operations

Food Services

- Significant PPE requirements
- Protaxis sprayers with food grade disinfectant
- Menus are being modified
- Waiver for “offering” entree versus “served” entree
- Cashless checkout lines
- Secondary - expand time periods and/or eating spaces where possible
- Elementary - eating meals in the classroom

Operations

Transportation

- Each family that qualifies for transportation is being surveyed as to whether they intend on using bus services or not over the next two weeks.
- Bus ridership will be managed to the fullest extent possible with a targeted goal of 50 students or fewer
- Masks will be required on all buses (First Student or City) unless the student has a specific and documented medical issue
- Cleaning and disinfecting plans for First Student and the City have been reviewed by KUSD Facilities

Operations

Visitors

- Limit non-essential visitors in buildings at all times (e.g. parent and community volunteers, guest speakers, mentors, recruiters, etc.)
- Drop off/pickup
 - Remain in vehicles
 - May drop off forgotten items such as lunches, musical instruments, etc, at designated locations



Operations

Building Permits

- No indoor permits for 2020-21 for outside organizations until further notice
- School-sponsored permits will be reviewed as received
- Outdoor permits will be reviewed for approval for both school-sponsored and outside organizations as of July 15, 2020

Operations

Notification Process

Individual names are **NOT** published

Notification of a confirmed case

- District will work directly with Kenosha County Division of Health regarding confirmed cases, including any closures, etc.
- District will provide steps for staff to follow regarding suspected and confirmed cases
- District will guide schools and provide letters that will be sent to families based on various scenarios

Student confirmed case

- Letter sent notifying parents/guardians that their child may have been exposed to a positive COVID-19 individual
- Increased/targeted cleaning
- Continued monitoring for any signs of illness

Staff confirmed or displaying symptoms

- Staff contacts their supervisor and Office of Human Resources
 - Office of Human Resources notifies the following individuals
 - Kenosha County Health Department
 - Chief of School Leadership
 - Chief of School Leadership notifies the following individuals
 - Director of Facilities
 - KUSD sends building wide notification confirmed COVID 19 case

Operations

Staff Quarantine

- Direct exposure to a confirmed positive COVID-19 case required to self-quarantine for 14 days
- Secondary contact (*e.g. spouse works closely with someone who has tested positive, but they themselves are not positive*) to an individual identified as positive with COVID-19 should monitor their symptoms.



Staff Concerns Reporting to Work

Staff concerns returning to work other than FFCRA

- Staff who may not feel safe returning to work should connect with their supervisor to learn about safety precautions put into place by the district
 - Example concerns may be age, health/medical reasons other than COVID, safety and others
 - If the employee still does not feel safe to return, supervisor will refer staff member to the Office of Human Resources to determine whether or not there are any leave options available based on their concerns (e.g. FMLA, ADA, etc.)

Operations

Substitute Support

- No staff out of district travel for conferences or professional learning until further notice (exceptions may be made based on the KUSD professional learning plan)
- Consideration to establish assigned building substitutes
- Consideration for in-house staff coverage rate change

International Travel and Quarantine Expectations

- The Department of State advises US citizens to avoid all international travel due to the global impact of COVID-19. If a staff member traveled internationally in the last 14 days:
 - Stay home, monitor health, and practice social distancing for 14 days after return from travel
 - Learn more about [what to do if you are sick](#) after travel
 - [CDC travel recommendations by country](#)
- Benefit-eligible employees will be required to utilize earned time off (e.g. sick, vacation, flextime, etc.) while self-quarantining following international travel
- No employer restrictions for travel within the U.S. (at this time)



Thank You